

### Specifications

Nominal Voltage		12 V
Capacity (25°C)	10HR(10.5V)	130Ah
	5HR(10.5V)	99.5Ah
	1HR(10.5V)	89.8Ah
Dimension	Length	409 ± 2mm (16.1inch)
	Width	176 ± 2mm (6.93inch)
	Height	223 ± 2mm (8.86inch)
	Total Height	223 ± 2mm (8.86inch)
Approx. Weight		38.0kg (83.8lbs) ± 4%
Terminal type		T11
Internal resistance (Fully charged, 25°C)		Approx. 5.5mΩ
Capacity affected by temperature (10HR)	40°C	102%
	25°C	100%
	0°C	85%
	-15°C	65%
Self-discharge (25°C)	3 month	Remaining Capacity: 93%
	6 month	Remaining Capacity: 85%
	12 month	Remaining Capacity: 72%
Nominal operating temperature		25°C ± 3°C (77°F ± 5°F)
Operating temperature range	Discharge	-15°C ~ 60°C
	Charge	-10°C ~ 60°C
	Storage	-20°C ~ 60°C
Float charging voltage(25°C)		13.60 to 13.80V Temperature compensation: -18mV/°C
Cyclic charging voltage(25°C)		14.10 to 14.40V Temperature compensation: -30mV/°C
Maximum charging current		25A
Terminal material		Copper
Maximum discharge current		600A(5 sec.)
Designed floating life(20°C)		15 years

- ◆ Gelled electrolyte technology;
- ◆ PVC separator;
- ◆ Recognized by UL & CE;
- ◆ ABS container.

### Constant Current Discharge Characteristics (A, 25°C)

F.V/TIME	10min	15min	30min	1h	2h	3h	4h	5h	8h	10h	20h
9.60V	238	188	131	73.8	41.8	29.6	23.4	20.4	14.2	12.5	7.10
9.90V	231	183	127	71.6	41.2	29.3	23.2	20.2	14.0	12.4	6.97
10.2V	221	175	122	68.6	40.6	29.1	23.0	20.0	13.9	12.2	6.84
10.5V	212	167	117	65.7	40.0	28.8	22.8	19.8	13.8	12.1	6.69
10.8V	200	158	110	62.0	38.9	27.9	22.1	19.2	13.4	12.0	6.54

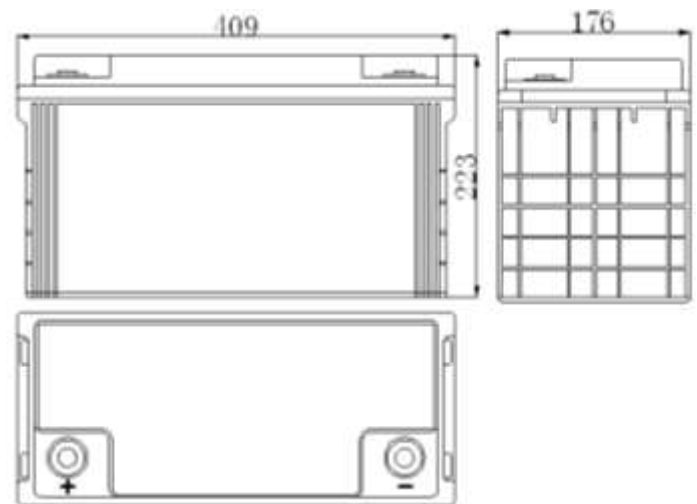
### Constant Power Discharge Characteristics (Watt, 25°C)

F.V/TIME	10min	15min	30min	1h	2h	3h	4h	5h	8h	10h	20h
9.60V	2610	2100	1485	841	486	346	276	241	169	150	85.7
9.90V	2532	2037	1440	816	479	343	273	238	168	148	84.1
10.2V	2427	1953	1381	782	472	340	271	236	166	147	82.5
10.5V	2323	1869	1321	749	465	337	268	234	165	145	80.7
10.8V	2193	1764	1247	707	453	327	260	227	160	144	78.9

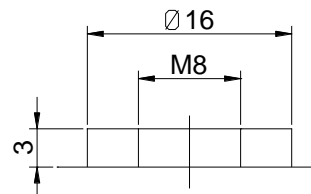
Note: The above characteristics data can be obtained within three charge/discharge cycles.



### Dimensions

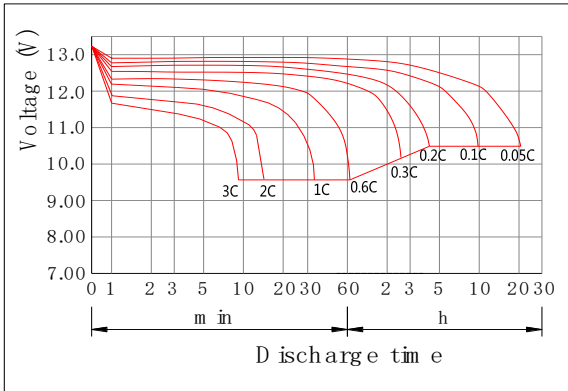


### Terminal

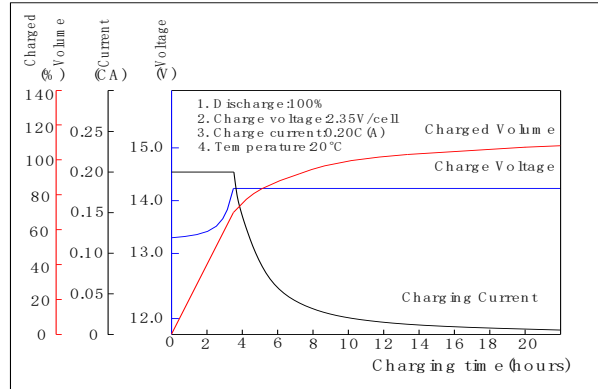


### Terminal T11

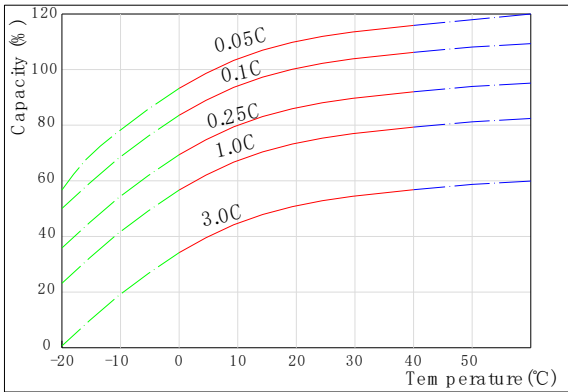
### Discharge Characteristics(25°C)



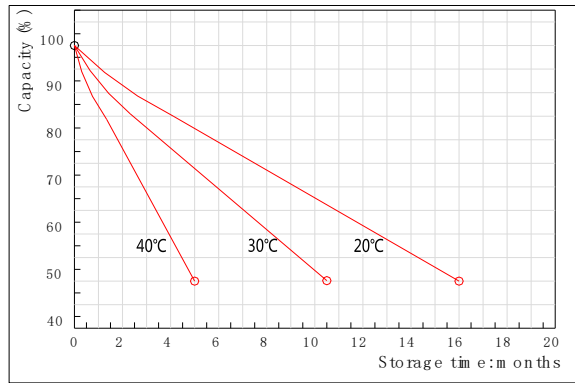
### Charging Characteristics(25°C)



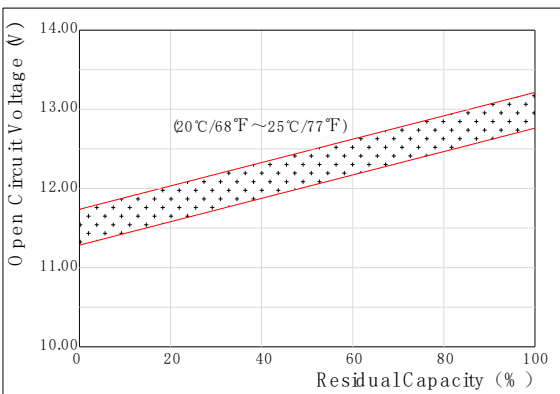
### Effect of Temperature on Capacity



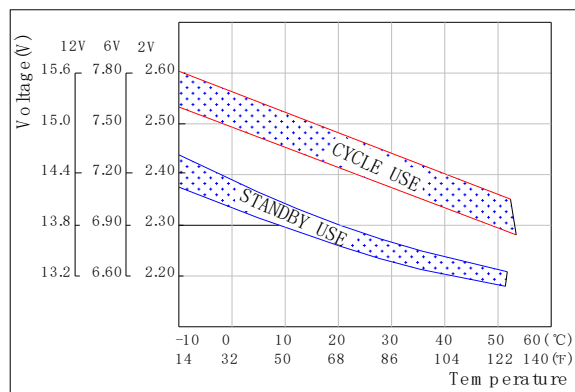
### Self-discharge Characteristics



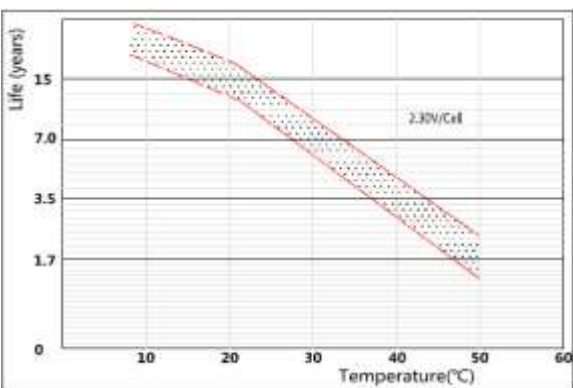
### The Relationship for Open Circuit Voltage and Residual Capacity (25°C)



### The Relationship for Charging Voltage and Temperature



### Floating Life on Temperature



### Cycle Life on D.O.D(25°C)

