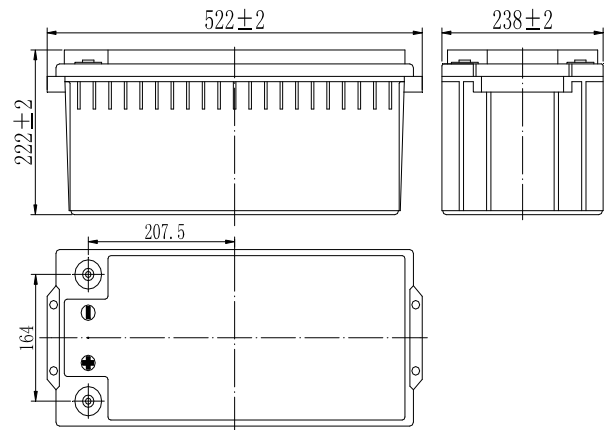


### Specifications

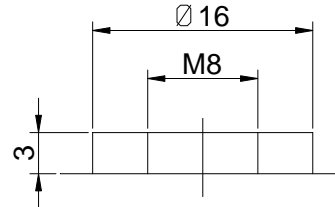


|   |              |   |
|---|--------------|---|
| Nominal Voltage                           |              | 12 V  |
| Capacity (25°C)                           | 20HR(10.5V)  | 210 Ah  |
|   | 5HR(10.2V)   | 166 Ah  |
|   | 1HR(9.6V)    | 126Ah   |
| Dimension                                 | Length       | 522 ± 2mm (20.55inch)                                 |
|   | Width        | 238 ± 2mm (9.37inch)                                  |
|   | Height       | 222 ± 2mm (8.74inch)                                  |
|   | Total Height | 222 ± 2mm (8.74inch)                                  |
| Approx. Weight                            |              | 62 kg (145.2lbs) ± 4%                                 |
| Terminal type                             |              | T11   |
| Internal resistance (Fully charged, 25°C) |              | Approx. 3.3m Ω  |
| Capacity affected by temperature (10HR)   | 40°C         | 103%  |
|   | 25°C         | 100%  |
|   | 0°C          | 88%   |
|   | -15°C        | 70%   |
| Self-discharge (25°C)                     | 3 month      | Remaining Capacity: 94%                               |
|   | 6 month      | Remaining Capacity: 88%                               |
|   | 12 month     | Remaining Capacity: 75%                               |
| Nominal operating temperature             |              | 25°C ± 3°C (77°F ± 5°F)                               |
| Operating temperature range               | Discharge    | -15°C ~ 50°C (5°F ~ 131°F)                            |
|   | Charge       | -10°C ~ 50°C (14°F ~ 131°F)                           |
|   | Storage      | -20°C ~ 50°C (-4°F ~ 131°F)                           |
| Float charging voltage(25°C)              |              | 13.50 to 13.80V<br>Temperature compensation: -18mV/°C |
| Cyclic charging voltage(25°C)             |              | 14.10 to 14.40V<br>Temperature compensation: -30mV/°C |
| Maximum charging current                  |              | 40A   |
| Terminal material                         |              | Copper  |
| Maximum discharge current                 |              | 1600A(5 sec.)   |
| Designed floating life(20°C)              |              | 15 years  |

### Dimensions



### Terminal



### Terminal T11

- ◆ Gelled electrolyte technology;
- ◆ PVC separator;
- ◆ Recognized by UL & CE;
- ◆ ABS container.

### Constant Current Discharge Characteristics (A, 25°C)

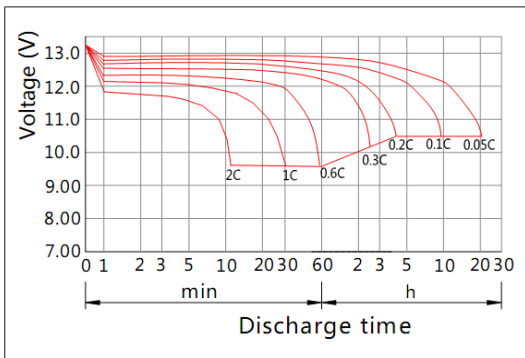
| F.V/TIME | 15min | 30min | 60min | 2h   | 3h   | 4h   | 5h   | 6h   | 8h   | 10h  | 20h  | 48h  | 120h |
|----------|-------|-------|-------|------|------|------|------|------|------|------|------|------|------|
| 9.60V    | 270   | 186   | 116   | 68.0 | 48.0 | 37.8 | 31.6 | 27.0 | 21.0 | 18.7 | 10.2 | ---  | ---  |
| 9.90V    | 264   | 183   | 115   | 67.6 | 47.6 | 37.6 | 31.4 | 26.8 | 20.8 | 18.7 | 10.2 | ---  | ---  |
| 10.2V    | 254   | 177   | 112   | 67.0 | 47.4 | 37.2 | 31.2 | 26.6 | 20.8 | 18.6 | 10.2 | 4.46 | ---  |
| 10.5V    | 246   | 173   | 110   | 66.0 | 47.0 | 37.0 | 31.0 | 26.4 | 20.6 | 18.5 | 10.0 | 4.43 | 1.84 |
| 10.8V    | 232   | 166   | 106   | 64.4 | 45.6 | 35.8 | 30.0 | 25.6 | 20.0 | 18.4 | 10.0 | 4.43 | 1.84 |

### Constant Power Discharge Characteristics (Watt, 25°C)

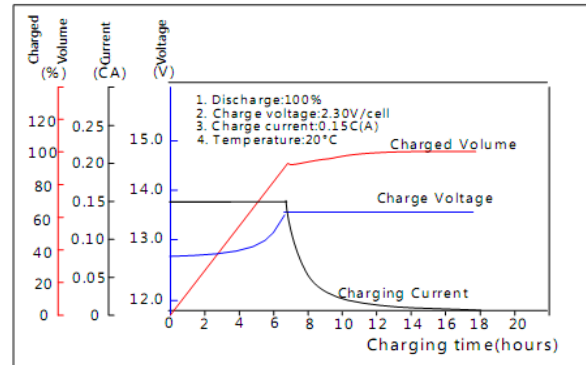
| F.V/TIME | 15min | 30min | 60min | 2h  | 3h  | 4h  | 5h  | 6h  | 8h  | 10h | 20h | 48h  | 120h |
|----------|-------|-------|-------|-----|-----|-----|-----|-----|-----|-----|-----|------|------|
| 9.60V    | 3014  | 2124  | 1340  | 792 | 566 | 446 | 376 | 320 | 250 | 224 | 123 | ---  | ---  |
| 9.90V    | 2940  | 2082  | 1320  | 786 | 564 | 444 | 374 | 318 | 250 | 224 | 123 | ---  | ---  |
| 10.2V    | 2832  | 2018  | 1288  | 780 | 560 | 440 | 370 | 316 | 248 | 224 | 123 | 53.5 | ---  |
| 10.5V    | 2736  | 1970  | 1262  | 768 | 556 | 438 | 368 | 314 | 246 | 222 | 121 | 53.2 | 22.2 |
| 10.8V    | 2592  | 1898  | 1222  | 748 | 538 | 424 | 358 | 304 | 238 | 220 | 121 | 53.2 | 22.0 |

Note: The above characteristics data can be obtained within three charge/discharge cycles.

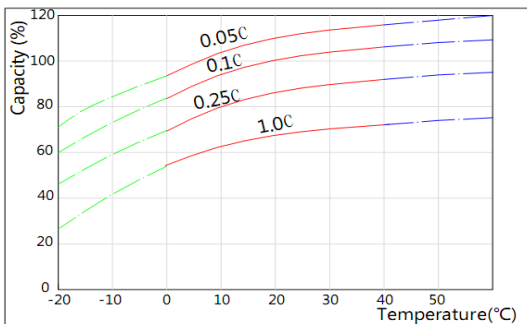
### Discharge Characteristics(25°C)



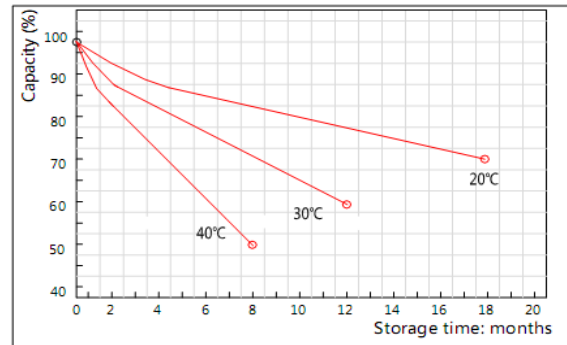
### Charging Characteristics(25°C)



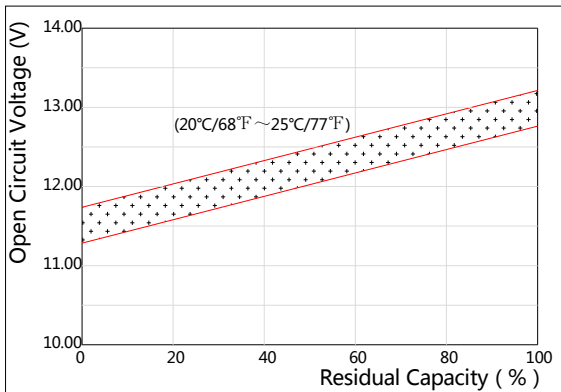
### Effect of Temperature on Capacity



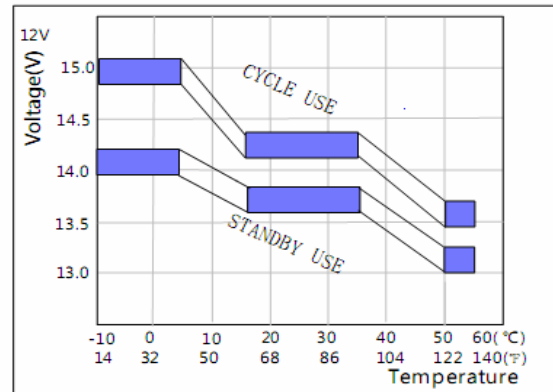
### Self-discharge Characteristics



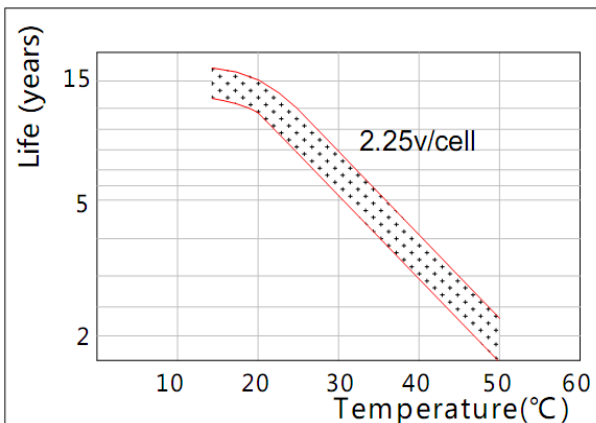
### The Relationship for Open Circuit Voltage and Residual Capacity (25°C)



### The Relationship for Charging Voltage and Temperature



### Floating Life on Temperature



### Cycle Life on D.O.D(25°C)

