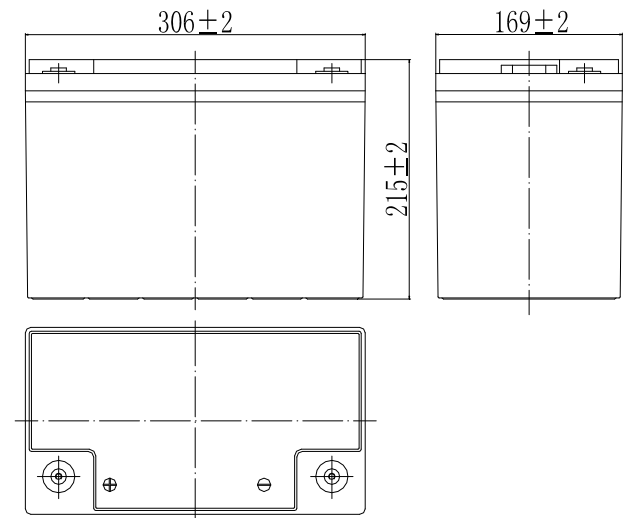


### Specifications

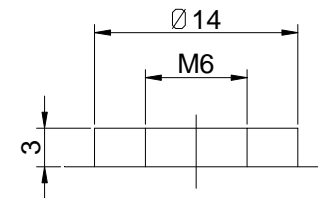
Nominal Voltage		12 V
Capacity (25°C)	20HR(10.5V)	90 Ah
	5HR(10.2V)	70 Ah
	1HR(9.6V)	52.4Ah
Dimension	Length	306mm ± 2 (12.05inch)
	Width	169mm ± 2 (6.65inch)
	Height	214mm ± 2 (8.43inch)
	Total Height	214mm ± 2 (8.43inch)
Approx. Weight		28.5kg (62.7lbs) ± 4%
Terminal type		T9
Internal resistance (Fully charged, 25°C)		Approx. 5.8m Ω
Capacity affected by temperature (10HR)	40°C	103%
	25°C	100%
	0°C	88%
	-15°C	70%
Self-discharge (25°C)	3 month	Remaining Capacity: 94%
	6 month	Remaining Capacity: 88%
	12 month	Remaining Capacity: 75%
Nominal operating temperature		25°C ± 3°C (77°F ± 5°F)
Operating temperature range	Discharge	-15°C ~ 55°C (5°F ~ 131°F)
	Charge	-10°C ~ 55°C (14°F ~ 131°F)
	Storage	-20°C ~ 55°C (-4°F ~ 131°F)
Float charging voltage(25°C)		13.50 to 13.80V Temperature compensation: -18mV/°C
Cyclic charging voltage(25°C)		14.10 to 14.40V Temperature compensation: -30mV/°C
Maximum charging current		18 A
Terminal material		Copper
Maximum discharge current		900A(5 sec.)
Designed floating life(20°C)		15 years



### Dimensions



### Terminal



Terminal T9

- ◆ Gelled electrolyte technology;
- ◆ PVC separator;
- ◆ Recognized by UL & CE;
- ◆ ABS container.

### Constant Current Discharge Characteristics (A, 25°C)

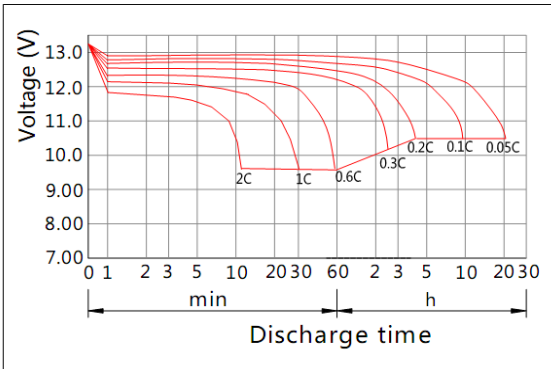
F.V/TIME	15min	30min	60min	2h	3h	4h	5h	6h	8h	10h	20h	48h	120h
9.60V	122	83.9	52.4	30.6	21.6	17.0	14.2	12.2	9.45	8.43	4.60	---	---
9.90V	119	82.2	51.6	30.4	21.4	16.9	14.1	12.1	9.36	8.42	4.59	---	---
10.2V	114	79.7	50.3	30.2	21.3	16.7	14.0	12.0	9.36	8.39	4.58	2.01	---
10.5V	111	77.8	49.3	29.7	21.2	16.7	14.0	11.9	9.27	8.33	4.50	2.00	0.83
10.8V	104	74.9	47.8	29.0	20.5	16.1	13.5	11.5	8.99	8.28	4.50	2.00	0.83

### Constant Power Discharge Characteristics (Watt, 25°C)

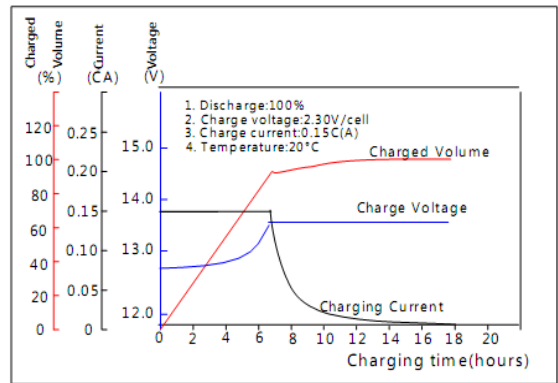
F.V/TIME	15min	30min	60min	2h	3h	4h	5h	6h	8h	10h	20h	48h	120h
9.60V	1356	956	603	356	255	201	169	144	113	101	55.4	---	---
9.90V	1323	937	594	354	254	200	168	143	113	101	55.4	---	---
10.2V	1274	908	580	351	252	198	167	142	112	101	55.2	24.1	---
10.5V	1231	887	568	346	250	197	166	141	111	99.9	54.3	23.9	9.99
10.8V	1166	854	550	337	242	191	161	137	107	99.0	54.5	23.9	9.90

Note: The above characteristics data can be obtained within three charge/discharge cycles.

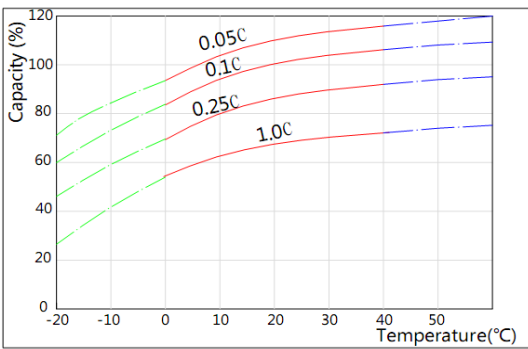
### Discharge Characteristics(25°C)



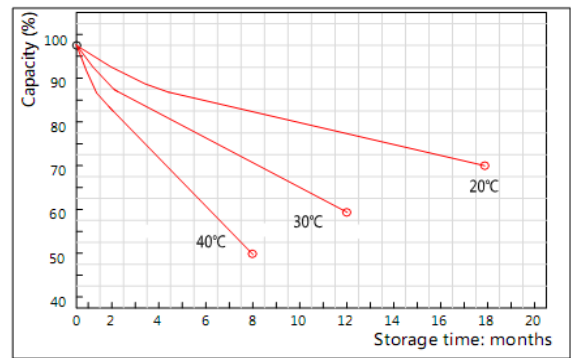
### Charging Characteristics(25°C)



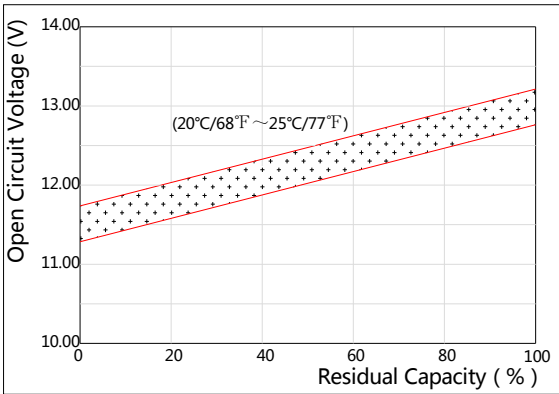
### Effect of Temperature on Capacity



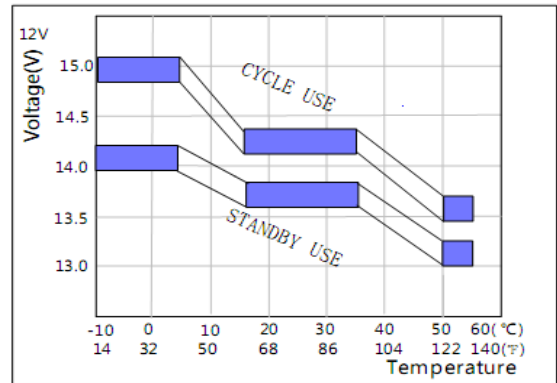
### Self-discharge Characteristics



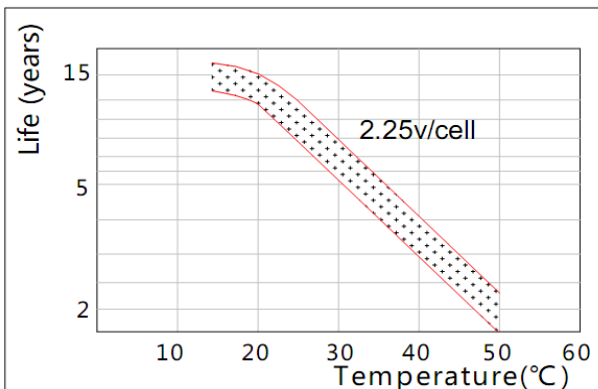
### The Relationship for Open Circuit Voltage and Residual Capacity (25°C)



### The Relationship for Charging Voltage and Temperature



### Floating Life on Temperature



### Cycle Life on D.O.D(25°C)

