

### Specifications



Nominal Voltage		6 V
Capacity (25°C)	20HR(5.25V)	225 Ah
	5HR(5.10V)	200Ah
	1HR(4.80V)	132Ah
Dimension	Length	243 ± 2mm (9.57inch)
	Width	187 ± 2mm (7.36inch)
	Height	253 ± 2mm (9.96inch)
	Total Height	276 ± 2mm (64.9inch)
Approx. Weight		36kg ± 4%
Terminal type		T9
Internal resistance (Fully charged, 25°C)		Approx. 2.1m Ω
Capacity affected by temperature (10HR)	40°C	103%
	25°C	100%
	0°C	88%
	-15°C	70%
Self-discharge (25°C)	3 month	Remaining Capacity: 94%
	6 month	Remaining Capacity: 88%
	12 month	Remaining Capacity: 75%
Nominal operating temperature		25°C ± 3°C (77°F ± 5°F)
Operating temperature range	Discharge	-15°C ~ 55°C (5°F ~ 131°F)
	Charge	-10°C ~ 55°C (14°F ~ 131°F)
	Storage	-20°C ~ 55°C (-4°F ~ 131°F)
Float charging voltage(25°C)		6.76 to 6.90V Temperature compensation: -9mV/°C
Cyclic charging voltage(25°C)		7.05 to 7.20V Temperature compensation: -15mV/°C
Maximum charging current		38A
Terminal material		Copper
Maximum discharge current		1900A(5 sec.)
Designed floating life(20°C)		15 years

- ◆ Gelled electrolyte technology;
- ◆ PVC separator;
- ◆ Recognized by UL & CE;
- ◆ ABS container.

### Constant Current Discharge Characteristics (A, 25°C)

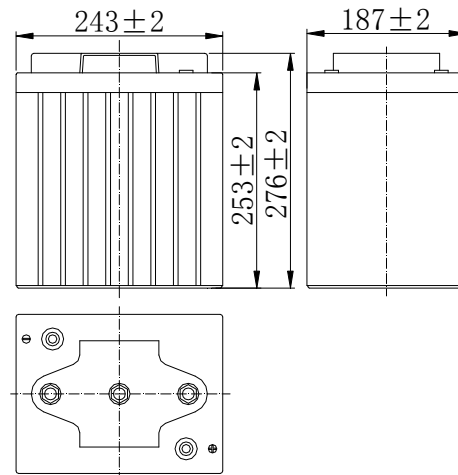
F.V/TIME	15min	30min	60min	2h	3h	4h	5h	6h	8h	10h	20h	48h	120h
4.80V	257	177	111	64.6	45.6	35.9	30.0	25.7	20.0	17.8	9.71	---	---
4.95V	251	173	109	64.2	45.2	35.7	29.8	25.5	19.8	17.8	9.69	---	---
5.10V	241	168	106	63.7	45.0	35.3	29.6	25.3	19.8	17.7	9.61	4.24	---
5.25V	234	164	104	62.7	44.7	35.2	29.5	25.1	19.6	17.6	9.50	4.22	1.75
5.40V	220	158	101	61.2	43.3	34.0	28.5	24.3	19.0	17.5	9.50	4.22	1.75

### Constant Power Discharge Characteristics (Watt, 25°C)

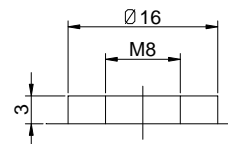
F.V/TIME	15min	30min	60min	2h	3h	4h	5h	6h	8h	10h	20h	48h	120h
4.80V	1433	1009	637	376	270	213	179	152	119	107	58.5	---	---
4.95V	1397	990	627	374	268	211	178	151	119	106	58.5	---	---
5.10V	1345	960	612	371	266	209	176	150	118	106	58.3	25.5	---
5.25V	1300	937	600	365	264	209	175	149	117	105	57.4	25.3	10.5
5.40V	1231	903	581	355	257	201	170	144	113	105	57.6	25.3	10.5

Note: The above characteristics data can be obtained within three charge/discharge cycles.

### Dimensions

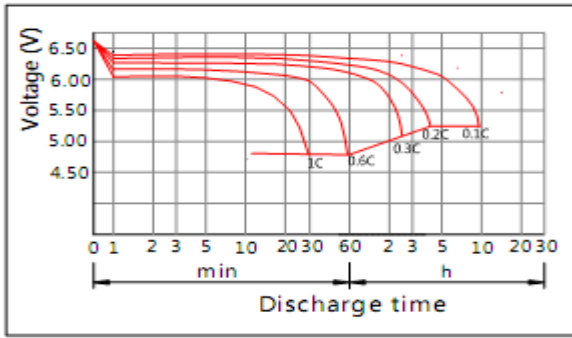


### Terminal

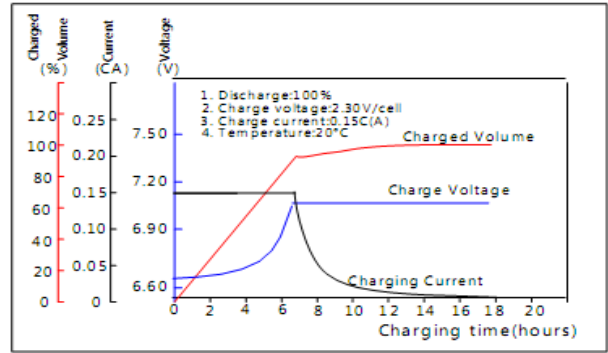


Terminal T11

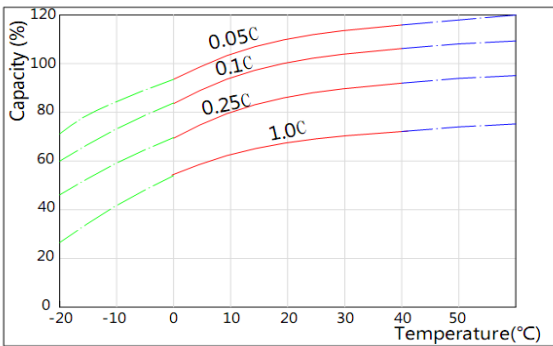
### Discharge Characteristics(25°C)



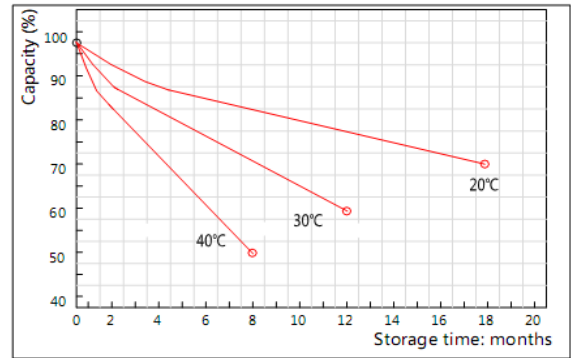
### Charging Characteristics(25°C)



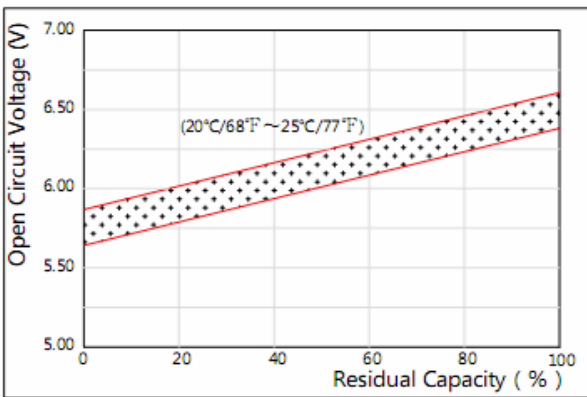
### Effect of Temperature on Capacity



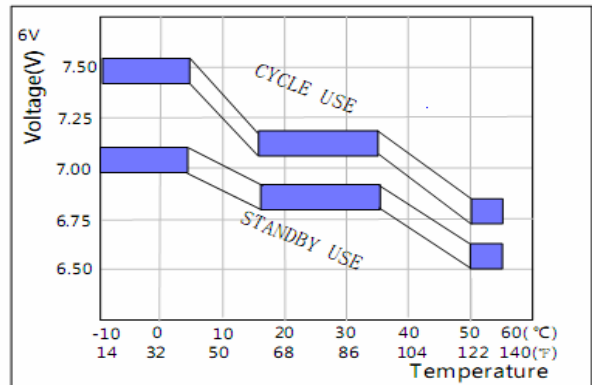
### Self-discharge Characteristics



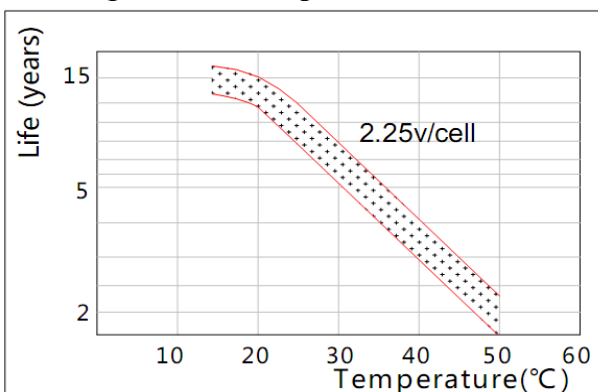
### The Relationship for Open Circuit Voltage and Residual Capacity (25°C)



### The Relationship for Charging Voltage and Temperature



### Floating Life on Temperature



### Cycle Life on D.O.D(25°C)

